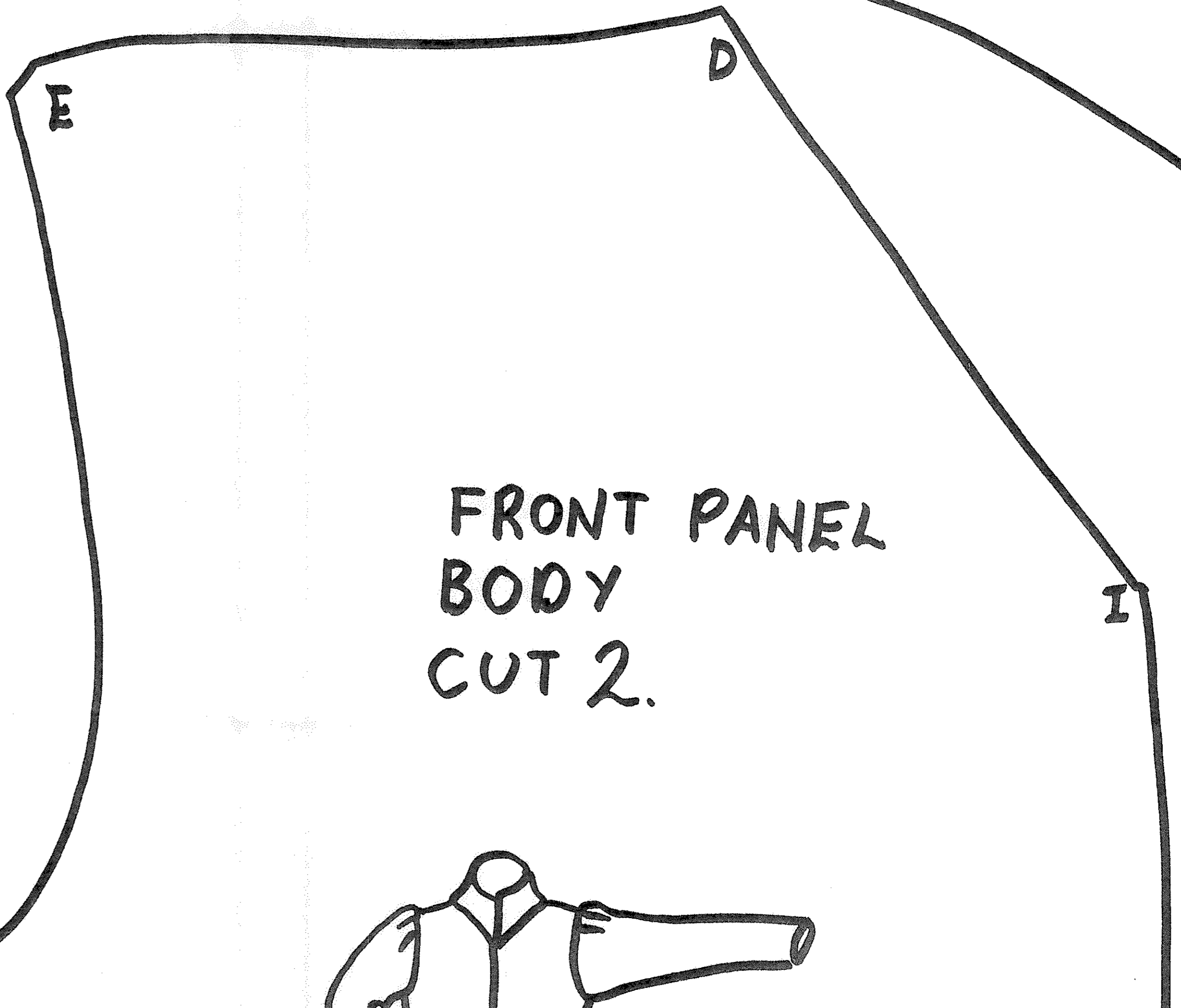
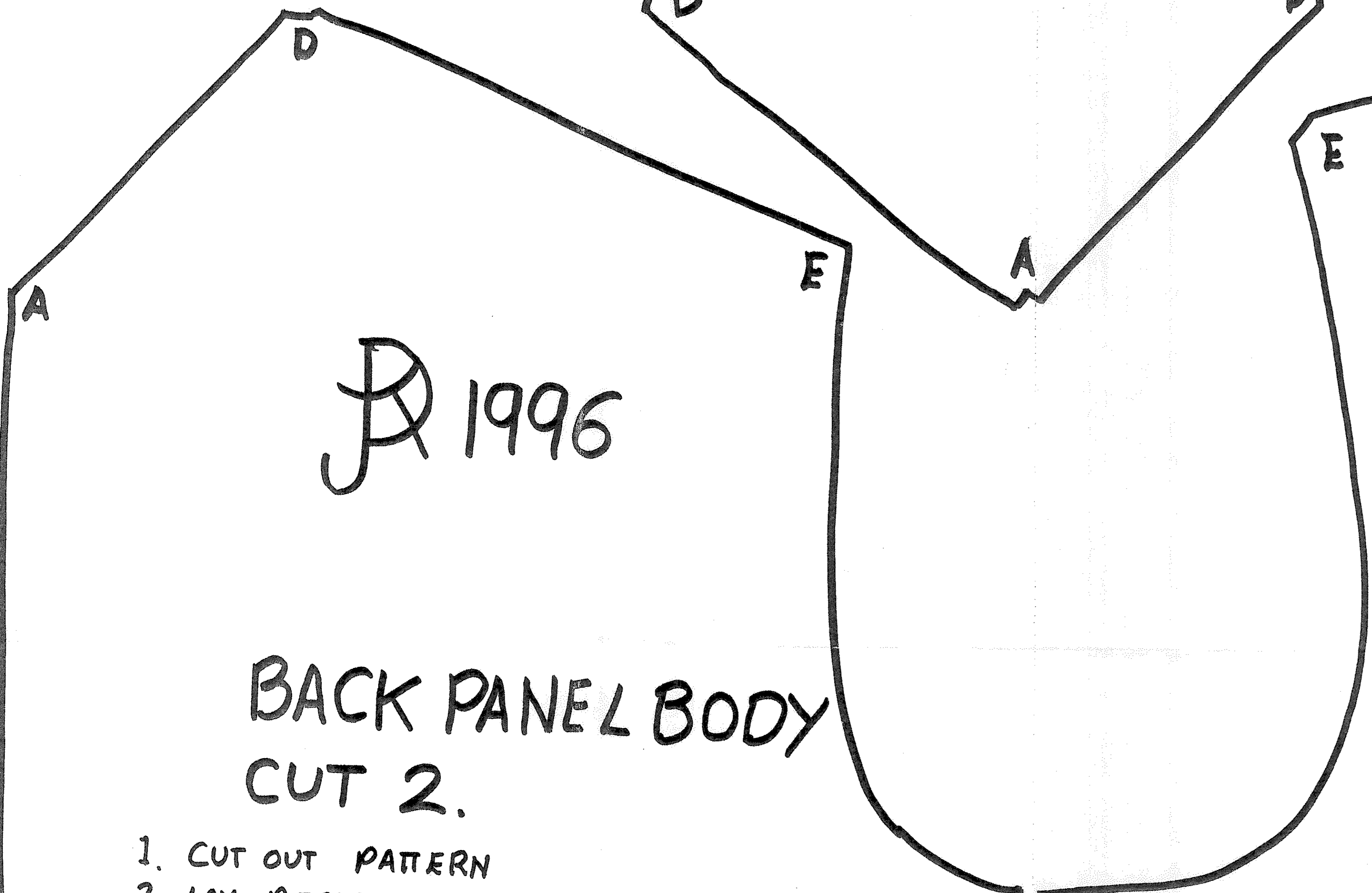
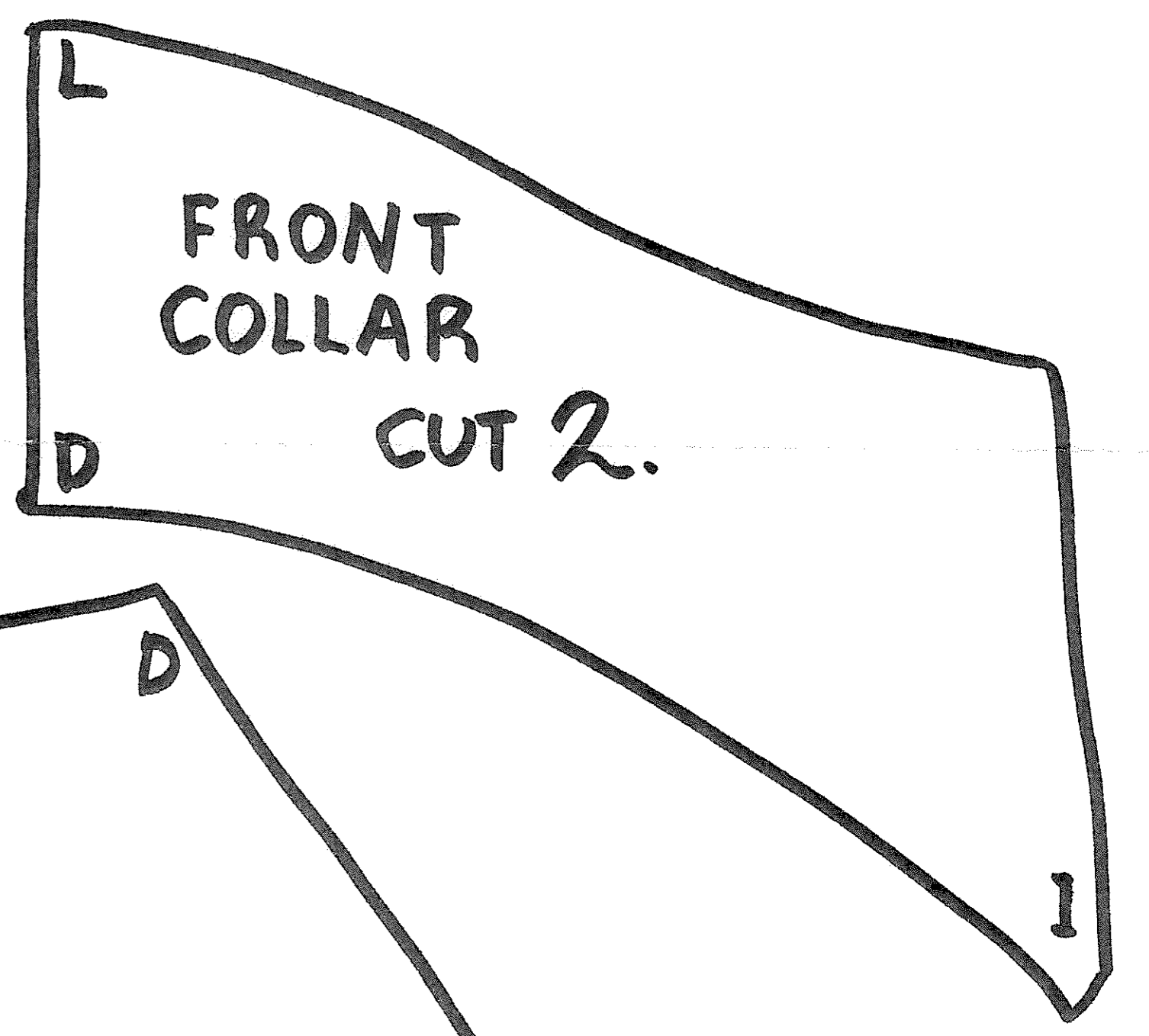
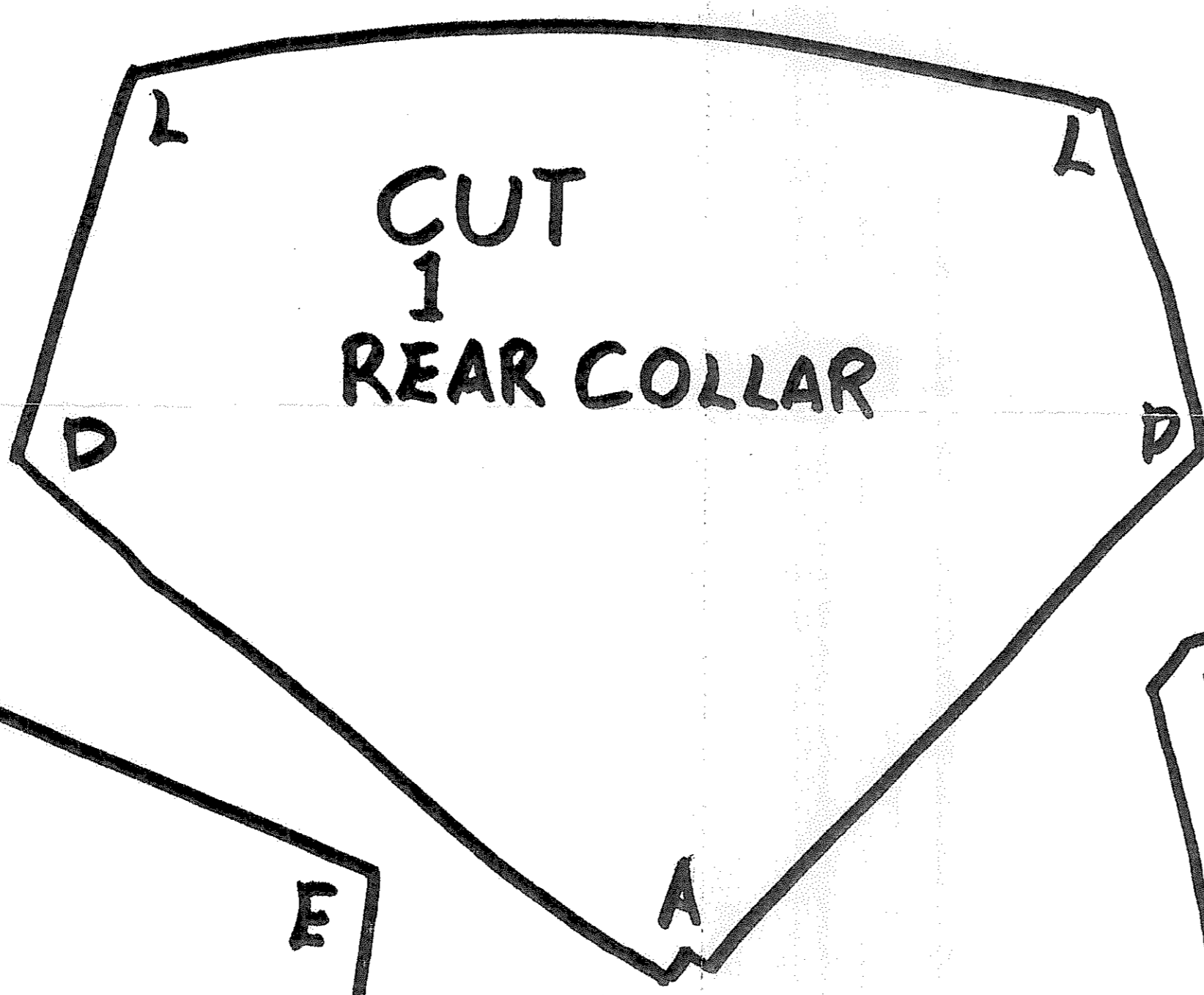


⑮ DOUBLET 46" 117cm CHEST



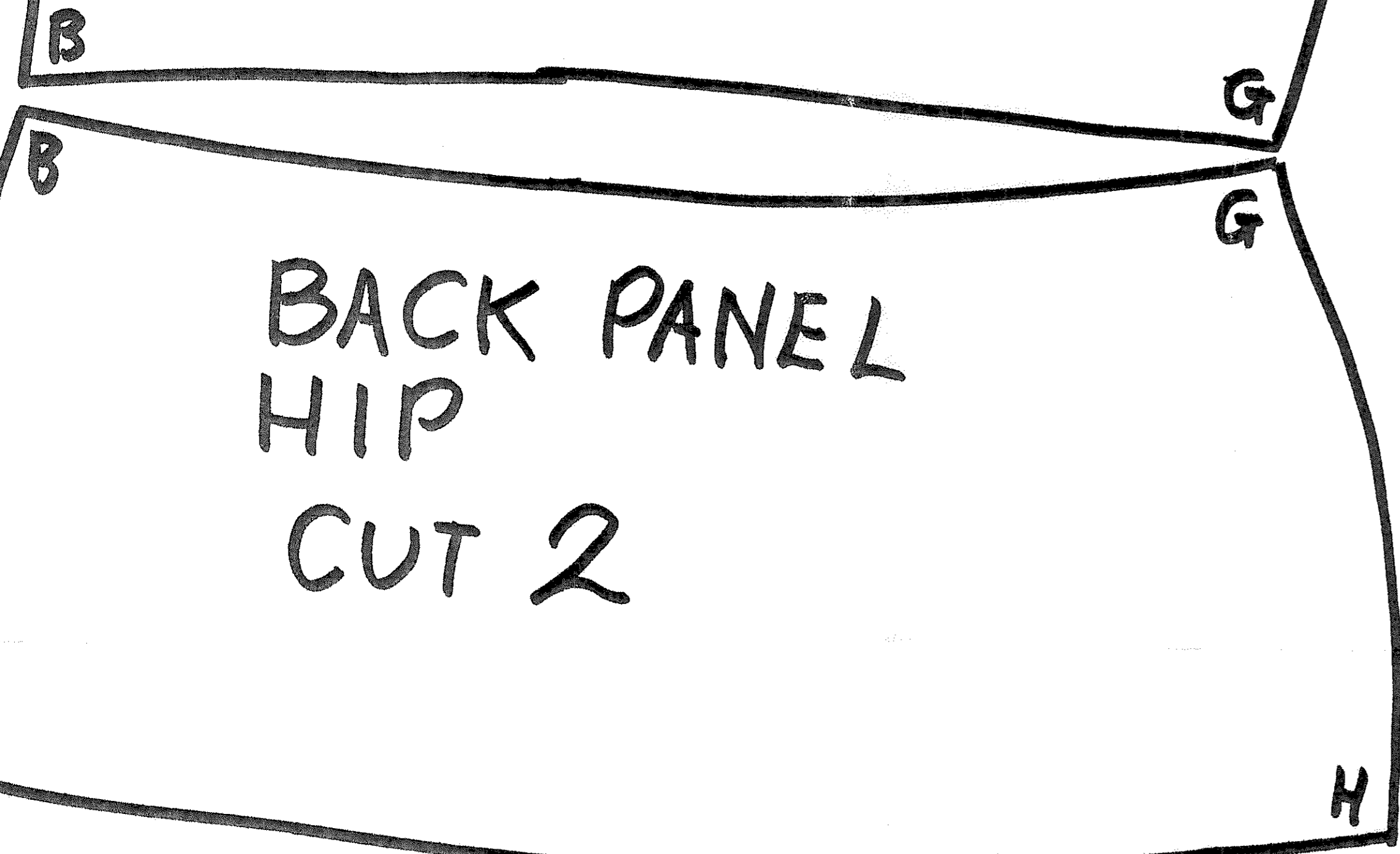
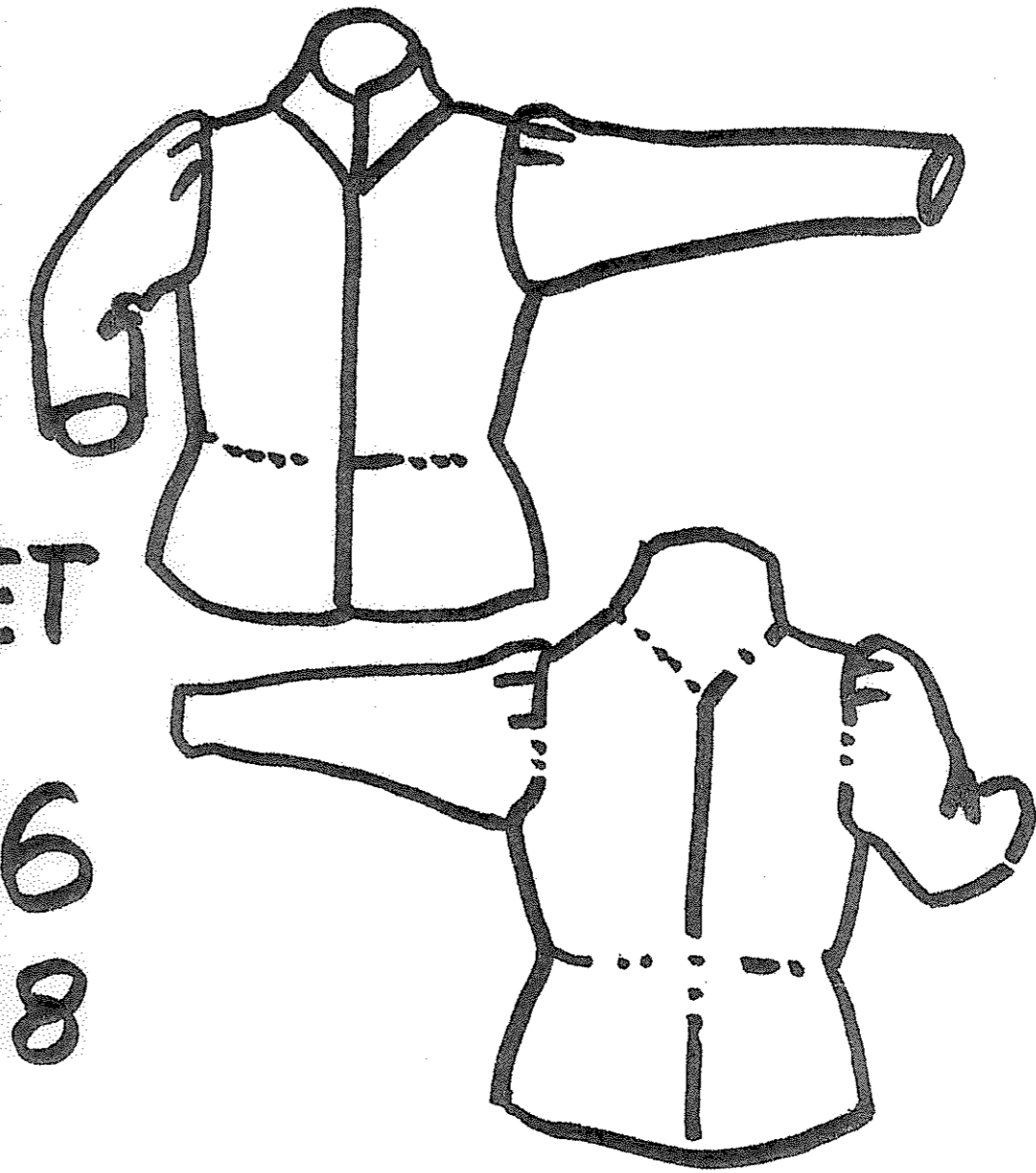
A 1996

BACK PANEL BODY CUT 2.

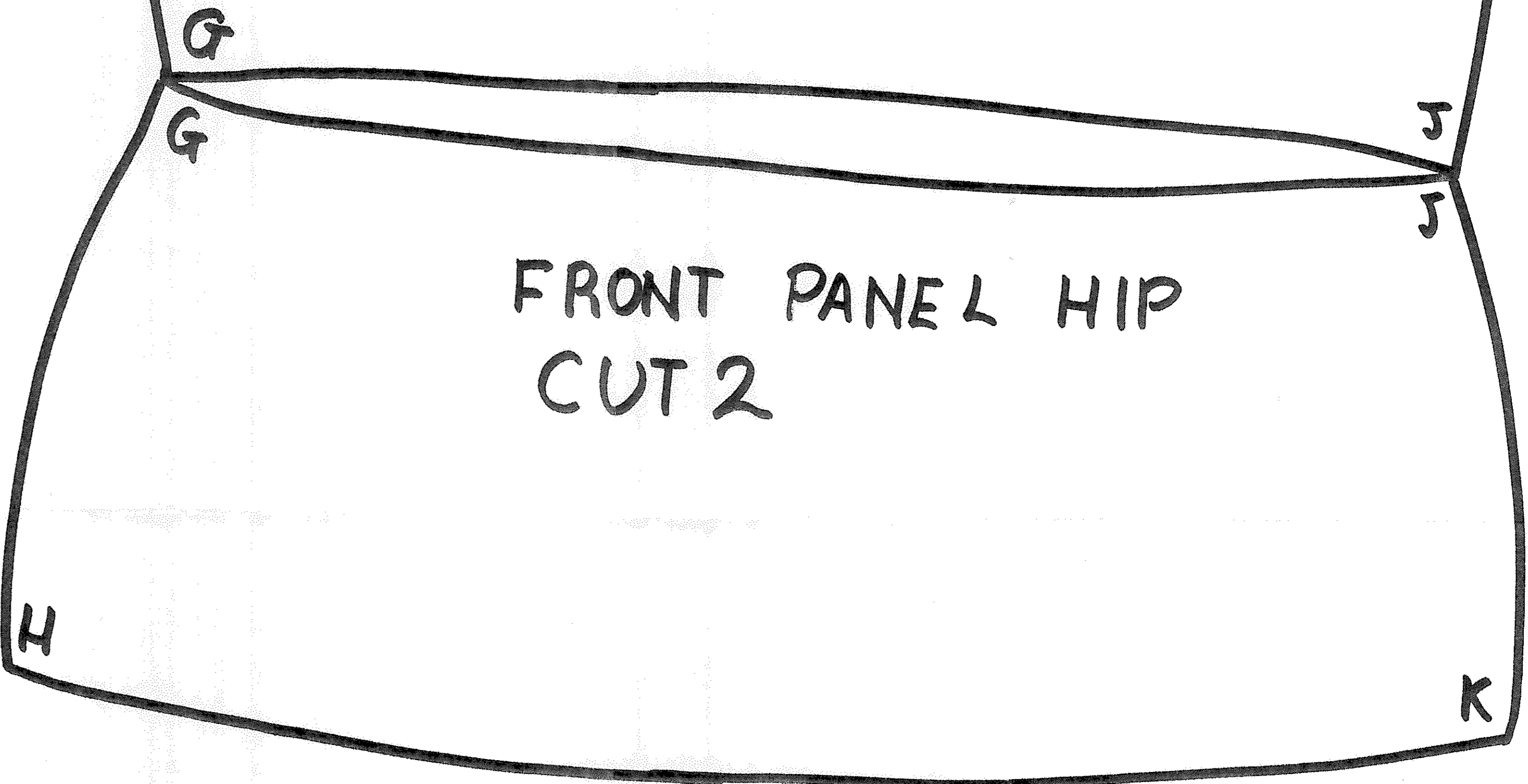
FRONT PANEL BODY CUT 2.

1. CUT OUT PATTERN
2. LAY PIECES ON CLOTH & CUT SET OF OUTERS (THE CARCASS) SET OF LININGS SET OF MIDDLE LAYERS (INTERLINING) IN HESSIAN OR OPEN WEAVE CANVAS.
3. TACK INTERLINERS TO LINERS.
4. ASSEMBLE CARCASS, ASSEMBLE LININGS & INTERLININGS AS ONE.
5. PUT CARCASS & LININGS TOGETHER, TURN EDGES IN & WHIP STITCH TOGETHER ROUND EDGES.
6. EYELET OR BUTTON HOLE FRONTS, EYELET FOR HOSE LACES, JUST BELOW WAIST SEAM.

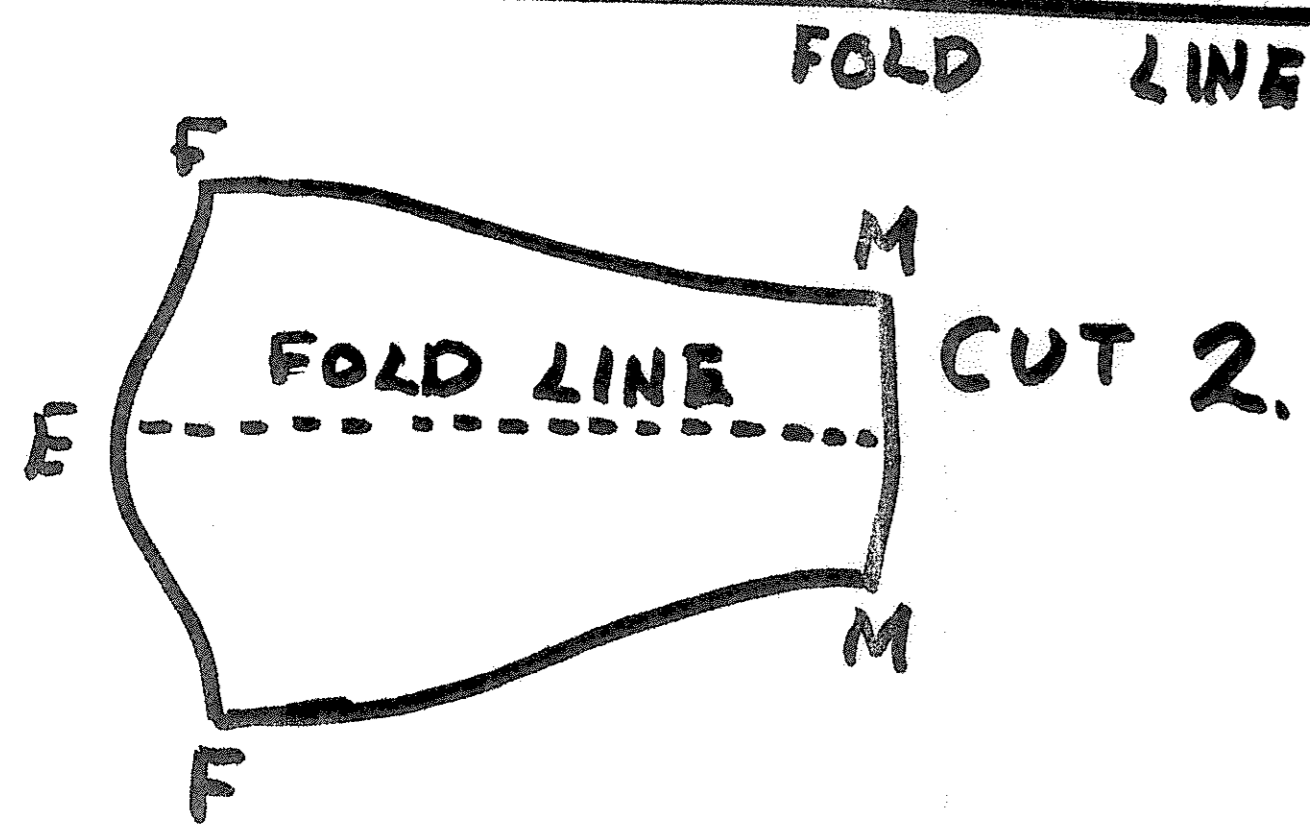
⑮ DOUBLET CHEST 46 WAIST 38



BACK PANEL HIP CUT 2



FRONT PANEL HIP CUT 2



CUT 2. HALF SLEEVE CUT 2 WHOLE SLEEVES

⑮ DOUBLET 46" CHEST 117cm

⑮ DOUBLET 46" CHEST 117cm.

⑮ DOUBLET 46" 117cm CHEST.